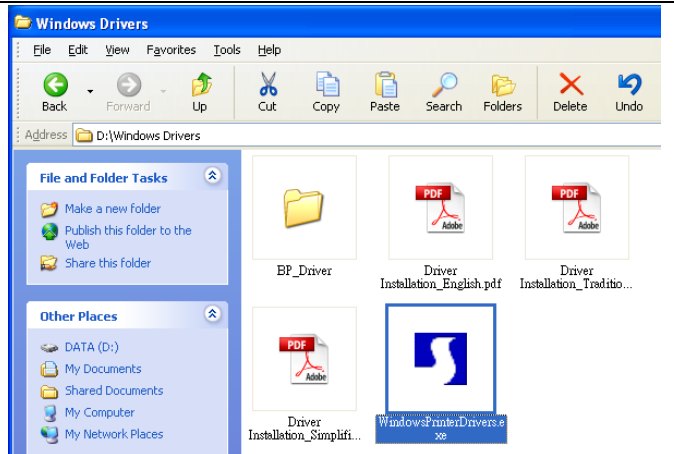


Windows Driver Installation

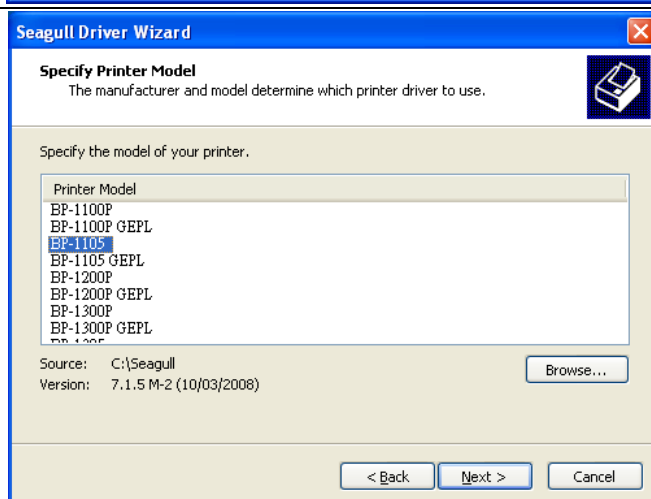
1. Insert the product CD to your computer's CD Drive and find the "Windows Drivers" folder.
2. Select the icon of driver file and click it to start the installation.

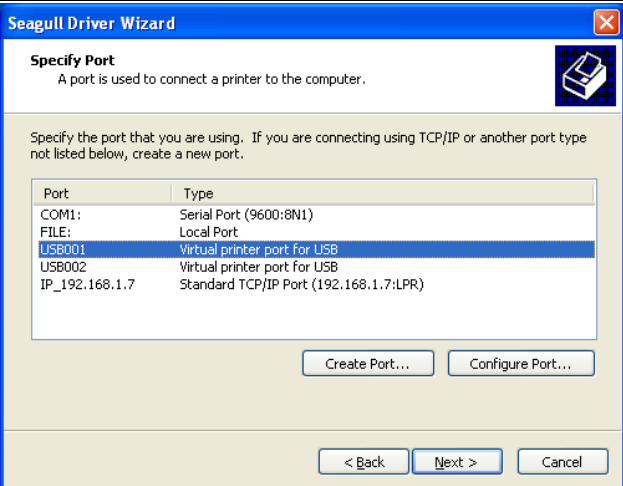
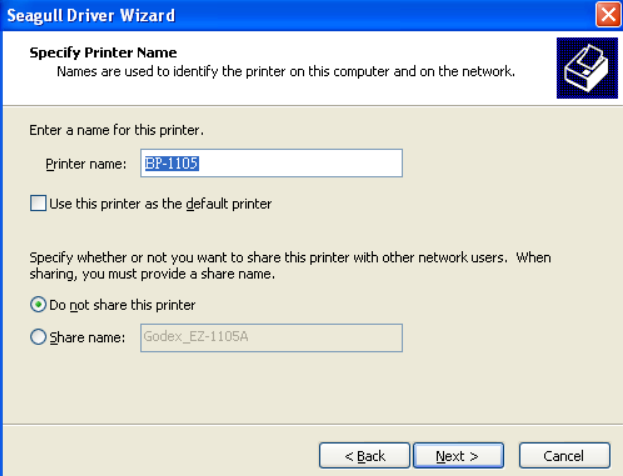
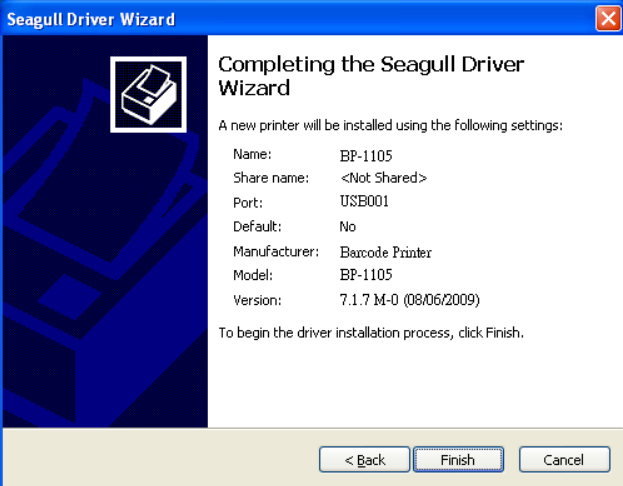
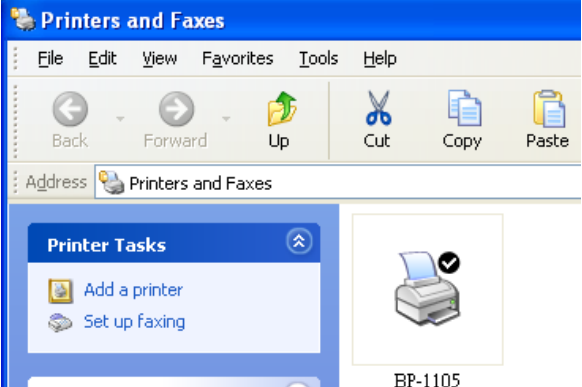


3. Follow the instruction on screen to keep the installation going. Then the Driver Wizard utility should run automatically.
4. Select "Install printer drivers".



5. Select printer model.



<p>6. Select connection port.</p>	 <p>The 'Specify Port' window in the Seagull Driver Wizard shows a list of ports. The 'USB001' port, described as 'Virtual printer port for USB', is selected. Other ports include COM1 (Serial Port), FILE (Local Port), USB002 (Virtual printer port for USB), and IP_192.168.1.7 (Standard TCP/IP Port).</p>
<p>7. Enter the printer name and set printer sharing option.</p>	 <p>The 'Specify Printer Name' window shows the printer name 'BP-1105' entered. The 'Do not share this printer' option is selected under the sharing settings.</p>
<p>8. A description page of printer settings will be displayed after all settings are completed.</p> <p>9. Check if all printer settings are correct and then press Finish to start copying driver files.</p> <p>10. Wait for file copying finished and complete the installation.</p>	 <p>The 'Completing the Seagull Driver Wizard' window displays the final settings: Name (BP-1105), Share name (<Not Shared>), Port (USB001), Default (No), Manufacturer (Barcode Printer), Model (BP-1105), and Version (7.1.7 M-0 (08/06/2009)). The 'Finish' button is highlighted.</p>
<p>11. After the driver installation is complete, there should be a new printer model on Windows "Printer and Faxes" setting.</p>	 <p>The Windows 'Printers and Faxes' control panel window shows the newly installed printer 'BP-1105' with a checkmark icon, indicating successful installation.</p>